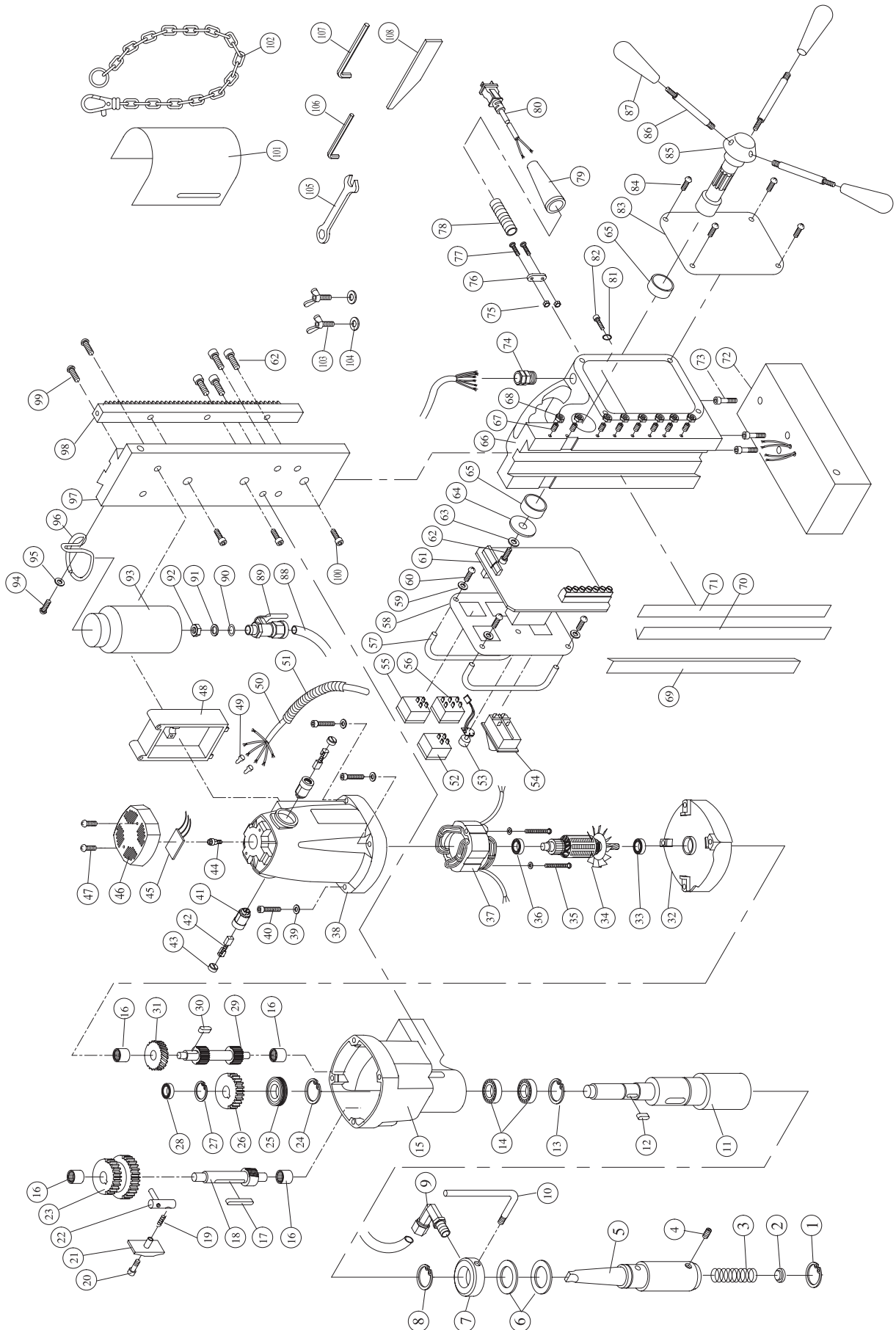


Evolution ME8500

Magnetic Drilling System

Service Parts List





Service Parts List

Evolution 8500 - Magnetic Drilling System

<i>ITEM#</i>	<i>PART#</i>	<i>DESCRIPTION</i>	<i>ITEM#</i>	<i>PART#</i>	<i>DESCRIPTION</i>
1	SPME850001	Snap Ring R-19	34	SPME850034	Armature 110v
2	SPME850002	Coolant Stop Seal	35	SPME850035	Pan Head Screw M5x80
3	SPME850003	Coolant Spring	36	SPME850036	Bearing 6202-2RS
4	SPME850004	Set Screw M8X10	37	SPME850037	Field Coil
5	SPME850005	Annular Cutter Adaptor	38	SPME850038	Motor Housing
6	SPME850006	O-Ring	39	SPME850039	Spring Washer M6
7	SPME850007	Feed Bearing	40	SPME850040	Hex Head Screw M6x85
8	SPME850008	Snap Ring R-29	41	SPME850041	Brush Holder 7x17
9	SPME850009	Coolant Elbow	42	SPME850042	Carbon Brush Set
10	SPME850010	Stop Bar	43	SPME850043	Brush Cap
11	SPME850011	Arbor	44	SPME850044	Bolt
12	SPME850012	Woodruff Key M5x5x12	45	SPME850045	Sensor
13	SPME850013	Snap Ring R-56	46	SPME850046	Tail Cover
14	SPME850014	Bearing 6006Z	47	SPME850047	Pan Head Screw M4x40
15	SPME850015	Gear Case	48	SPME850048	Mounting Box
16	SPME850016	Bearing HK1010	49	SPME850049	Wire Connector C-4
17	SPME850017	Woodruff Key M5x5x45	50	SPME850050	Motor Cord 16AWG 1015
18	SPME850018	Second Gear Pinion 14T	51	SPME850051	Cord Sheath NGN-12B
19	SPME850019	Selector Spring	52	SPME850052	Motor On (Green) Switch
20	SPME850020	Slot-Head Screw	53	SPME850053	Speed Control Knob
21	SPME850021	Selector Slider	54	SPME850054	Magnet Switch
22	SPME850022	Selector Fork	55	SPME850055	Motor Off (Red) Switch
23	SPME850023	Second Gear 50T, 57T	56	SPME850056	Reversing Switch
24	SPME850024	Circlip S-27	57	SPME850057	Guard Bar
25	SPME850025	Oil Seal TC 30x45x5	58	SPME850058	Switch Panel
26	SPME850026	Driven Gear 47T	59	SPME850059	Flat Washer M4
27	SPME850027	Circlip S-16	60	SPME850060	Hex Head Screw M4x16
28	SPME850028	Bearing 6201ZZ	61	SPME850061	Electronics Panel
29	SPME850029	First Gear Pinion 22T, 15T	62	SPME850062	Hex Head Screw M8x16
30	SPME850030	Woodruff Key M5x5x10	63	SPME850063	Spring Washer M8
31	SPME850031	First Gear 39T	64	SPME850064	Flat Washer 40x8x2.5
32	SPME850032	Gear Plate	65	SPME850065	Bushing 32x38x12
33	SPME850033	Bearing 6300-2RS	66	SPME850066	Body Assy

Call for Pricing and Part Availability - Toll Free: 866-EVO-TOOL



Service Parts List

Evolution 8500 - Magnetic Drilling System

<i>ITEM#</i>	<i>PART#</i>	<i>DESCRIPTION</i>	<i>ITEM#</i>	<i>PART#</i>	<i>DESCRIPTION</i>
67	SPME850067	Set Screw M5x25	100	SPME850100	Hex Head Screw M8x20
68	SPME850068	Nut M5	101	SPME850101	Chip Guard
69	SPME850069	Slide Strip Bearing (Left)	102	SPME850102	Safety Chain
70	SPME850070	Slide Strip Bearing (Right)	103	SPME850103	Butterfly Screw M6x10
71	SPME850071	Tensioner	104	SPME850104	Flat Washer 6x13x1
72	SPME850072	Electromagnet	105	SPME850105	Wrench M8
73	SPME850073	Hex Head Screw M6x20	106	SPME850106	Hex Wrench M4
74	SPME850074	Cable Gland	107	SPME850107	Hex Wrench M2.5
75	SPME850075	Nut M4	108	SPME850108	Drift
76	SPME850076	Cord Clip			
77	SPME850077	Pan Head Screw M4x25			
78	SPME850078	Cord Support			
79	SPME850079	Cord Armor			
80	SPME850080	Power Supply Cord			
81	SPME850081	Star Washer M4			
82	SPME850082	Pan Head Screw M4x6			
83	SPME850083	Side Panel			
84	SPME850084	Screw M4x8			
85	SPME850085	Crank Spindle			
86	SPME850086	Crank Handle			
87	SPME850087	Grip			
88	SPME850088	Tube			
89	SPME850089	Oil Feed Valve			
90	SPME850090	O-Ring 7.5x1.5			
91	SPME850091	Flat Washer 1/2x24x2.5			
92	SPME850092	Nut			
93	SPME850093	Oil Tank 600ml			
94	SPME850094	Pan Head Screw M5x10			
95	SPME850095	Flat Washer M5			
96	SPME850096	Oil Tank Bracket			
97	SPME850097	Slide Plate			
98	SPME850098	Gear Rack			
99	SPME850099	Self-Tapping Screw M4x50			

Call for Pricing and Part Availability - Toll Free: 866-EVO-TOOL