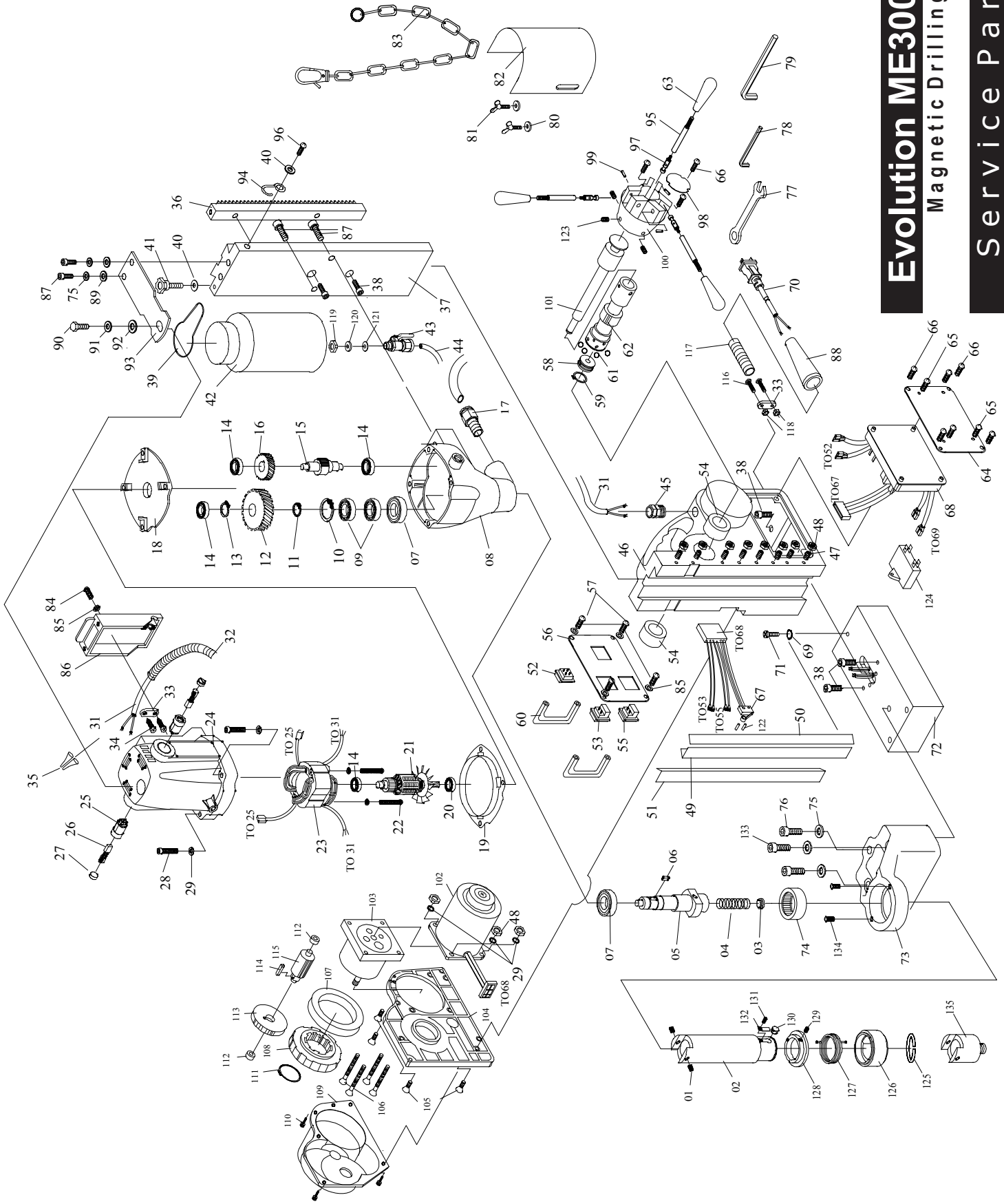


# Evolution ME3000 Auto V2

## Magnetic Drilling System

### Service Parts List



# Evolution ME3000 Auto V2

## Magnetic Drilling System

### Service Parts List

Item	Description	Part No.	Qty/Machine	List £
1	SET SCREW M5 x 6	ME3001	5	0.67
2	CUTTER ARBOR - Complete (inc 125 - 132)	ME3002	1	52.47
3	WATER SEAL	ME3003	1	4.20
4	SPRING	ME3004	1	4.20
5	MAIN DRIVE SPINDLE	ME3005	1	31.47
6	WOODRUFF KEY M5x5x10	ME3006	1	1.37
7	OIL SEAL 22x32x7	ME3007	2	1.37
8	GEARBOX CASE	ME3008	1	27.27
9	BEARING 6003ZZ	ME3009	2	8.37
10	SNAP RING R-35	ME3010	1	1.37
11	CIRCLIP S-17	ME3011	1	1.37
12	FINAL DRIVE GEAR 52T	ME3012	1	16.77
13	CIRCLIP S-14	ME3013	1	1.37
14	BEARING 608ZZ	ME3014	4	8.37
15	GEAR PINION 8T	ME3015	1	17.47
16	1st DRIVE GEAR 50T	ME3016	1	17.47
17	COOLANT ELBOW CONNECTOR	ME3017	1	5.50
18	INTER GEAR PLATE	ME3018	1	20.97
19	FAN SHROUD	ME3019	1	4.03
20	BEARING 609ZZ	ME3020	1	8.37
21A	ARMATURE 230V	ME3021A	1	62.27
21B	ARMATURE 110V	ME3021B	1	62.27
22	SCREW M5x55	ME3022	2	0.67
23A	FIELD ASSY 230V	ME3023A	1	37.07
23B	FIELD ASSY 110V	ME3023B	1	37.07
24	MOTOR HOUSING	ME3024	1	27.97
25	BRUSH HOLDER	ME3025	2	6.27
26	CARBON BRUSH SET	ME3026	2	13.27
27	BRUSH CAP	ME3027	2	1.37
28	Hex. HEAD BOLT M5x40	ME3028	4	0.81
29	SPRING WASHER M5	ME3029	8	0.67
31	MOTOR CORD	ME3031	1	5.57
32	CORD ARMOUR	ME3032	1	6.76
33	CORD CLIP	ME3033	2	1.09
34	PAN HEAD SCREW M4x16	ME3034	2	0.67
35	WIRE CONNECTOR C4	ME3035	2	0.67
36	GEAR RACK	ME3036	1	27.27
37	MAIN SLIDE PLATE	ME3037	1	34.27
38	Hex. HEAD BOLT M6x20	ME3038	5	0.67
39	COOLANT TANK HANGER	ME3039	1	4.17
40	FLAT WASHER 3/16 X 16 X 1	ME3040	2	0.67
41	RETAINING KNOB M5 x 16	ME3041	1	2.07
42	COOLANT TANK	ME3042	1	6.97
43	COOLANT TAP	ME3043	1	6.27
44	COOLANT PU TUBE	ME3044	1	1.65
45	CONDUIT GLAND	ME3045	1	3.47
46	MAIN BODY ASSEMBLY	ME3046	1	68.92
47	SET SCREW M5 X 20	ME3047	8	0.67
48	NUT M5	ME3048	8	0.67

# Evolution ME3000 Auto V2

## Magnetic Drilling System

### Service Parts List

Item	Description	Part No.	Qty/Machine	List £
49	BRASS SLIDE RIGHT	ME3049	1	11.87
50	STEEL STRIP TENSIONER	ME3050	1	8.02
51	BRASS SLIDE LEFT	ME3051	1	11.87
52	ELECTRO-MAGNET SWITCH	ME3052	1	20.27
53	MOTOR SWITCH BUTTON ON	ME3053	1	20.27
54	BUSHING	ME3054	2	7.32
55	MOTOR SWITCH BUTTON OFF	ME3055	1	20.27
56	FRONT SWITCH PANEL	ME3056	1	26.46
57	SCREW M4 x 16	ME3057	4	0.67
58	SELECTOR CAM	ME3058	1	13.27
59	SCREW & WASHER	ME3059	1	1.37
60	SWITCH PLATE BAR SHORT	ME3060	2	3.47
61	ENGAGEMENT BALL M5	ME3061	8	1.30
62	CRANK SPINDLE	ME3062	1	43.72
63	HANDLE GRIP	ME3063	3	3.40
64	REAR COVER PLATE	ME3064	1	13.27
65	SCREW M3.5x6	ME3065	4	0.67
66	PAN HEAD SCREW M4x8	ME3066	7	0.67
67	STROKE LIMITING SWITCH	ME3067	1	17.26
68A	ELECTRONIC UNIT 230V	ME3068A	1	115.82
68B	ELECTRONIC UNIT 110V	ME3068B	1	115.82
69	STAR WASHER M4	ME3069	1	0.67
70	POWER CORD	ME3070	1	6.76
71	PAN HEAD SCREW M4x6	ME3071	1	0.67
72	ELECTRO-MAGNET	ME3072	1	69.27
73	ARBOR SUPPORT BRACKET	ME3073	1	23.07
74	ARBOR SUPPORT BEARING HK3516	ME3074	1	12.50
75	SPRING WASHER M8	ME3075	3	0.67
76	Hex. HEAD SCREW M8	ME3076	3	1.02
77	COMBINATION WRENCH M8	ME3077	1	2.77
78	Hex. WRENCH M2.5	ME3078	1	1.37
79	Hex. WRENCH M4	ME3079	1	1.37
80	WASHER M6x13x1	ME3080	2	0.67
81	BUTTERFLY SCREW M6x10	ME3081	2	1.37
82	SAFETY GUARD	ME3082	1	11.87
83	SAFETY CHAIN	ME3083	1	6.97
84	PAN HEAD SCREW M4x12	ME3084	1	0.67
85	FLATWASHER M4	ME3085	5	0.67
86	COVER PLATE	ME3086	1	6.27
87	HEX. HEAD SCREW M8x16	ME3087	4	0.67
88	CORD PROTECTOR	ME3088	1	2.07
89	FLAT WASHER M8x20x1	ME3089	2	0.67
90	HEX. HEAD SCREW M10x30 V1	ME3090	1	1.37
91	SPRING WASHER M10 V1	ME3091	1	0.67
92	FLAT WASHER M10x23x2 V1	ME3092	1	0.67
93	MOTOR MOUNTING PLATE V1	ME3093	1	6.27
94	HANGER	ME3094	1	2.77
95	CRANK HANDLE	ME3095	3	6.97
96	PAN HEAD SCREW M5x8	ME3096	1	0.67

# Evolution ME3000 Auto V2

## Magnetic Drilling System

### Service Parts List

Item	Description	Part No.	Qty/Machine	List £
97	CRANK LEVER TIP	ME3097	3	4.83
98	HUB COVER	ME3098	1	4.83
99	SPRING PIN 4.2x25	ME3099	3	1.93
100	CRANK HUB	ME3100	1	36.65
101	SELECTOR ROD	ME3101	1	30.80
102A	AUTO FEED MOTOR UNIT 230V	ME3102A	1	61.92
102B	AUTO FEED MOTOR UNIT 110V	ME3102B	1	61.92
103	FEED MOTOR GEAR BOX UNIT	ME3103	1	47.92
104	FEED SUPPORT PLATE	ME3104	1	24.96
105	FLAT HEAD SCREW M5x15	ME3105	4	1.37
106	FLAT HEAD SCREW M5x45	ME3106	4	1.37
107	BALL BEARING 6809ZZ	ME3107	1	20.20
108	GEAR 61T	ME3108	1	30.00
109	AUTO FEED SIDE COVER	ME3109	1	20.13
110	HEX HEAD SCREW M5x10	ME3110	5	0.67
111	C-CLIP C-28	ME3111	1	1.65
112	BUSHING 8x12x6	ME3112	2	5.50
113	OUTPUT GEAR 80T	ME3113	1	25.80
114	WOODRUFF KEY 4x4x10	ME3114	1	2.07
115	GEAR PINION 12T	ME3115	1	24.40
116	SCREW M4x25	ME3116	2	0.67
117	CORD PROTECTOR	ME3117	1	2.07
118	HEX NUT M4x8	ME3118	2	0.67
119	HEX NUT	ME3119	1	0.67
120	FLAT WASHER 1/2x24x2.5	ME3120	1	0.67
121	O-RING 7.5x1.5	ME3121	1	0.67
122	LIMIT SWITCH PIN 2.2x10	ME3122	2	0.88
123	SET SCREW M8x8	ME3123	3	0.67
124	CAPACITOR	ME3124	1	16.42
125	CIRCLIP	ME3125	1	3.47
126	COLLAR	ME3126	1	13.27
127	RETURN SPRING	ME3127	1	6.27
128	SPRING RETAINER RING	ME3128	1	10.47
129	SET SCREW M3x12	ME3129	1	0.67
130	LOCK PIN	ME3130	1	2.00
131	SCREW M3x6	ME3131	1	0.67
132	FLAT SPRING	ME3132	1	2.07
133	HEX BOLT M8x60	ME3133	1	0.67
134	SCREW M4x10	ME3134	2	0.67

HiTech Evolution Europe Ltd

Evolution House, New Street, Holbrook Industrial Estate, Sheffield, S20 3GH, UK

Tel: +44 (0) 114 251 1022 Fax: +44 (0) 114 247 3339

[www.evolutionpowertools.com](http://www.evolutionpowertools.com)